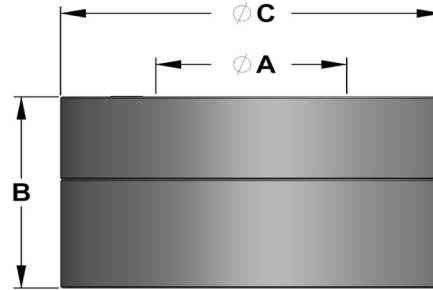


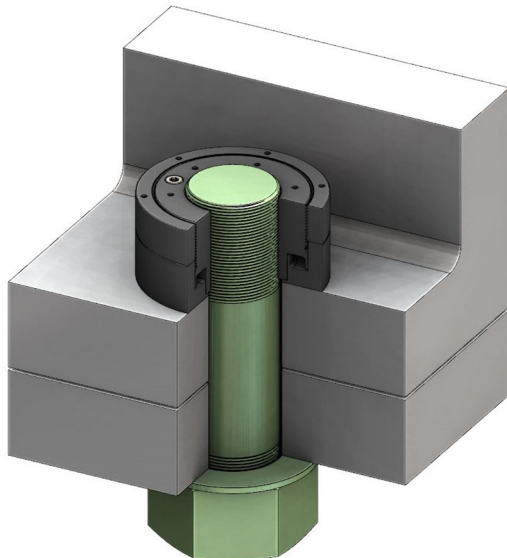
RIVERHAWK HYDRAULIC NUT DATA SHEET

Rev A
09/06/2017



Thread Diameter "A" (in)	Hydraulic Ram Area (in ²)	Maximum Hydraulic Load (lbs)	Nut Height "B" (in)	Nut Diameter "C" (in)	Maximum Stroke (in)
1.500	2.651	79,530	2.250	3.000	0.225
1.625	3.111	93,330	2.438	3.250	0.244
1.750	3.608	108,240	2.625	3.500	0.263
1.875	4.142	124,260	2.813	3.750	0.281
2.000	4.712	141,360	3.000	4.000	0.300
2.250	5.964	178,920	3.375	4.500	0.338
2.500	7.363	220,890	3.750	5.000	0.375
2.750	8.909	267,270	4.125	5.500	0.413
3.000	10.603	318,090	4.500	6.000	0.450
3.250	12.444	373,320	4.875	6.500	0.488
3.500	14.432	432,960	5.250	7.000	0.525
3.750	16.567	497,010	5.625	7.500	0.563
4.000	18.850	565,500	6.000	8.000	0.600
4.500	23.856	715,680	6.750	9.000	0.675
5.000	29.452	883,560	7.500	10.000	0.750
5.500	35.637	1,069,110	8.250	11.000	0.825
6.000	42.412	1,272,360	9.000	12.000	0.900
6.500	49.775	1,493,250	9.750	13.000	0.975
7.000	57.727	1,731,810	10.500	14.000	1.050

* Dimensions subject to change due to continual product development



Notes:

- 1) Maximum hydraulic load is produced when the hydraulic nut is pressurized to 30,000 psi.
- 2) Retained bolt loads up to 45,000 psi preload stress in the thread tensile area.
- 3) The alloy steel used in standard applications maintains its properties up to approximately 500°F.
- 4) Detailed instruction manual provided with each hydraulic nut.
- 5) All hydraulic nuts are tested at maximum rated pressure prior to shipment.
- 6) Multiple tools can be linked together for simultaneous tensioning.
- 7) Custom designs and materials available if above designs do not fit your application.



215 Clinton Road
New Hartford, New York 13413
Phone: (315) 768-4855
info@riverhawk.com
www.riverhawk.com